



# call to artists

**EXPRESSIONS OF INTEREST  
STRAWBERRY HILL'S EARLY  
JAPANESE CANADIANS**

Submission Deadline: March 10, 2025  
Artist Fee: \$280,000

The City of Surrey invites Expressions of Interest (EOI) from professional artists or artist teams to create a heritage feature with integrated artworks in a public park, as well as a related small-scale intervention in the historic Strawberry Hill neighbourhood of Newton, Surrey. These spaces will connect residents to the legacy of Surrey's early Japanese Canadians and will confront the injustice of their uprooting, dispossession, and internment.

The heritage feature at R. A. Nicholson Park is the project's main component. This feature will serve as a gathering and learning space for all members of the community. The artist will design plaza artwork(s) and surrounding area a single project where the art and landscape design reinforce each other. For this project, the City envisions a contemporary and creative approach to the act of heritage interpretation.

A smaller, secondary component will be installed at Inouye Park, a public park named for the only Japanese Canadian to have his property returned after internment 1942 to 1949. The artwork will be located at the park entrance at 92 Ave and 134 St. The artist will have the opportunity to enhance the park entrance and/or the seating area at that location.

This is a collaborative project where the artist will work closely with a landscape architect from the City to ensure the technical feasibility of their design, as well as with a researcher, hired specifically for the project, to incorporate heritage interpretation into the design. Feedback received through community consultation sessions will also have to be considered.

This project is being generously funded through the Japanese Canadian Legacies Society.



## Who is Eligible?

- This call is open to all professional artists and artist teams.
  - o Artists with Japanese Canadian or Japanese heritage will be prioritized.
- Applicants must demonstrate the creative expertise and technical skills to manage a project of this scale from concept development to installation.
- Applicants must have the skills to liaise and coordinate with project contractors and municipal staff.

## What projects will be considered?

- Concepts must adhere to the technical constraints below.
- Concepts must be the original creation of the artist(s) and must not have been previously executed.

## Project Goals

- To publicly acknowledge the legacy of Surrey's early Japanese Canadians and share the historical injustice of their uprooting, dispossession, and internment/ incarceration.
- To encourage gathering, discussion, and contemplation at locations of historical significance, connecting current residents with the history of those who came before them.

# Selection Process

- Proposals will be shortlisted by a selection panel consisting of community members and art professionals.
- Staff will ensure that the selection panel has Japanese-Canadian representatives.
- The selection process will occur in two phases.

## PHASE 1: Expressions of Interest

- » Eligible artists will submit an Expression of Interest (EOI)
- » The selection panel will review all eligible submissions and shortlist 5 to 7 artists for the next phase.

## PHASE 2: Concept Development

- » Short-listed artists will be given a project orientation.
- » Each short-listed artist or team will be given an honorarium of \$1,500 to further develop their concept proposal.
- » Proposals will be presented to the selection panel.
- » The selection panel will recommend the final artwork for presentation to the Arts and Culture Advisory Committee.

# Site Notes

## Strawberry Hill Neighbourhood

- » Historic neighbourhood in Newton, in the northwestern part of Surrey, situated on former agricultural land.
- » Listed on the [Canadian Historic Places registry](#), it is closely tied to Japanese Canadian history, its agricultural roots and contributions to the community.

## R.A. Nicholson Park

- » Location of main heritage feature.
- » Located on the southern boundary of Strawberry Hill neighbourhood, this public park is a high traffic thoroughfare and home to Strawberry Hill Hall and a playground.
- » The park is named for R.A. Nicholson, a City employee who championed the importance of designating park spaces for public leisure and connection in the urban planning of the growing metropolis.

## Strawberry Hill Hall

- » Adjacent to R.A. Nicholson park.
- » Listed on the [Canadian Historic Places registry](#) and the [City of Surrey Heritage register](#).
- » Original hall was constructed in 1909, partly funded by the local Japanese Canadian community and home to the Strawberry Hill Farmers' Institute.
- » A replica Hall, located in the same grounds as the original, will reopen in late 2025 and will offer fulltime childcare services.

## Inouye Park

- » Location of smaller-scale feature.
- » Natural area public park with walk/bike trail and seating.
- » Named in 2022 for Zennosuke Inouye, a Surrey resident who was the only Japanese Canadian to have his property returned after internment 1942–1949.

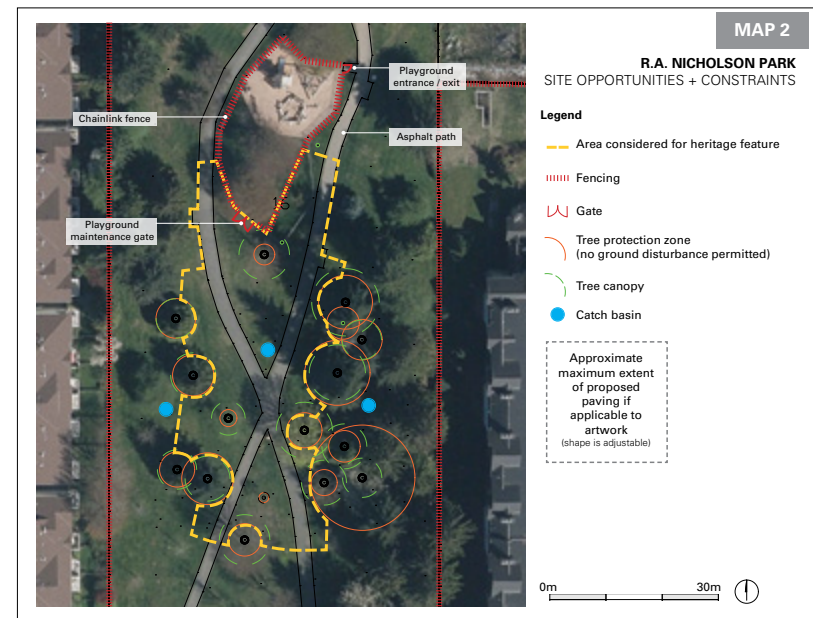
# Technical Considerations

## R.A. Nicholson Park

- A site overview is provided in MAP 1.
- Due to required setbacks from existing trees, all proposed landscaping and artwork elements must remain within the yellow boundary outlined in MAP 2.
- Artists are free to propose single or multiple elements within the outlined boundary area.
- Proposed landscape elements, such as hardscape, planting and seating will have to be reviewed and approved by a City of Surrey Landscape Architect.
- For artists that are not familiar with landscape design, landscape elements can be co-designed with a City of Surrey Landscape Architect.
- The City of Surrey Parks Development Services team can assist in the construction of foundational landscape elements. The following can be used as rough costing for brainstorming purposes should the artist want to engage their services:
  - » Hardscape construction - \$220.00 /sqm
    - Based on cast in place concrete
  - » City of Surrey Standard Bench - \$2,900.00 / unit
    - Supplied and installed
- Long-term maintenance needs for landscape and artwork elements should be considered.
- MAP 3 outlines tree species that can be found on site.

## Inouye Park

- The artwork will be installed at the park entrance and seating area located at 92 Ave and 134 St.
- The artwork should be installed within the boundaries outlined in MAP 5.
- This section of the park contains:
  - » Two covered seating areas with picnic tables
  - » Seven benches
  - » A paved path
  - » A simple wooden fence with bollards marking the park entrance
- The artwork can be freestanding, attached to one of the structures or applied to the park furniture.



# Administrative Notes

- The City respects the intellectual property rights of the artist.
- The artist will retain ownership rights over the image.
- Submitted images will only be shared with the selection panel and will not be used for any other purpose.
- Due to the large number of submissions, only the artist selected for the opportunity will be contacted.
- The City reserves the right to not implement the project should circumstances change.

# Budget

**The budget for the selected artwork is \$280,000**

This is inclusive of all costs including:

- » Artist fees
- » Design
- » Materials
- » Insurance
- » Engineering expenses
- » Artwork Fabrication
- » Delivery & installation
- » Travel and taxes

Approximate budget allocation across the 2 sites should be:

- » 80% - RA Nicholson Park
- » 20% - Inouye Park



# Schedule

## KEY DATES

<b>March 10</b>	Application Deadline
<b>Late March</b>	Phase 1 Selection Panel
<b>April 2025</b>	Announcement of Short-listed Artists
<b>April to May 2025</b>	Concept Development
<b>June 2025</b>	Phase 2 Selection Panel
<b>June to July</b>	Presentation to Advisory Committee & City Council
<b>Fall 2025 to Spring 2026</b>	Design & Fabrication
<b>Spring 2026</b>	Installation

*\*Dates are subject to change based on construction schedule*

# How to Apply

## Deadline for application is March 10, 2025

Please submit an Expression of Interest to Public Art staff at:

Email: [publicart@surrey.ca](mailto:publicart@surrey.ca)

Subject line: **Japanese Canadian Heritage Project – (Your Name)**

### Your Expression of Interest should contain the following information:

**Contact Details** Name, address, email, and phone number.

**Letter of Intent** Outline your approach to this project and initial concept ideas (1 page max).  
» Concept sketches or visuals are not required at this stage, but may be submitted

**Artist CV** History of past commissions, exhibitions, education and/or relevant experience.  
» If applying as a team, please include one for each team member

**Bio & Artist Statement** A brief introduction to who you are, your practice and your connection to the Japanese Canadian community. (1 page max)

**Portfolio** Up to 10 images of past work.  
» Please include titles, date, description, and materials.

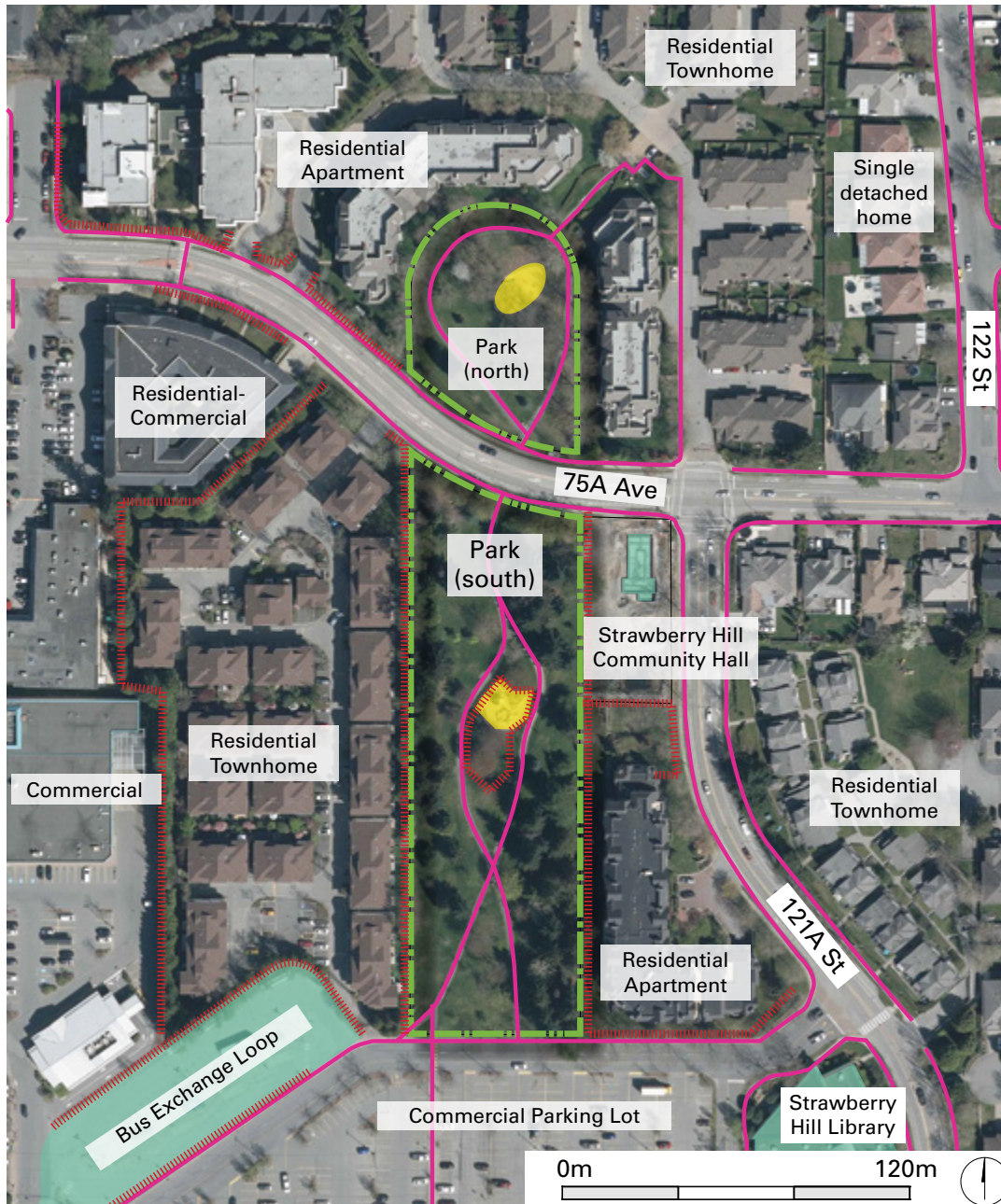
**Package** Combine all items into a single PDF document (10mb max)

# MAP 1

## R.A. NICHOLSON PARK SITE OVERVIEW

### Legend

-  Park property line
-  Walking trail
-  Barrier fencing
-  Civic amenities
-  Playground



# MAP 2

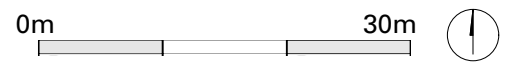
## R.A. NICHOLSON PARK SITE OPPORTUNITIES + CONSTRAINTS



### Legend

- Area considered for heritage feature
- ||||| Fencing
- ∩ Gate
- Tree protection zone (no ground disturbance permitted)
- Tree canopy
- Catch basin

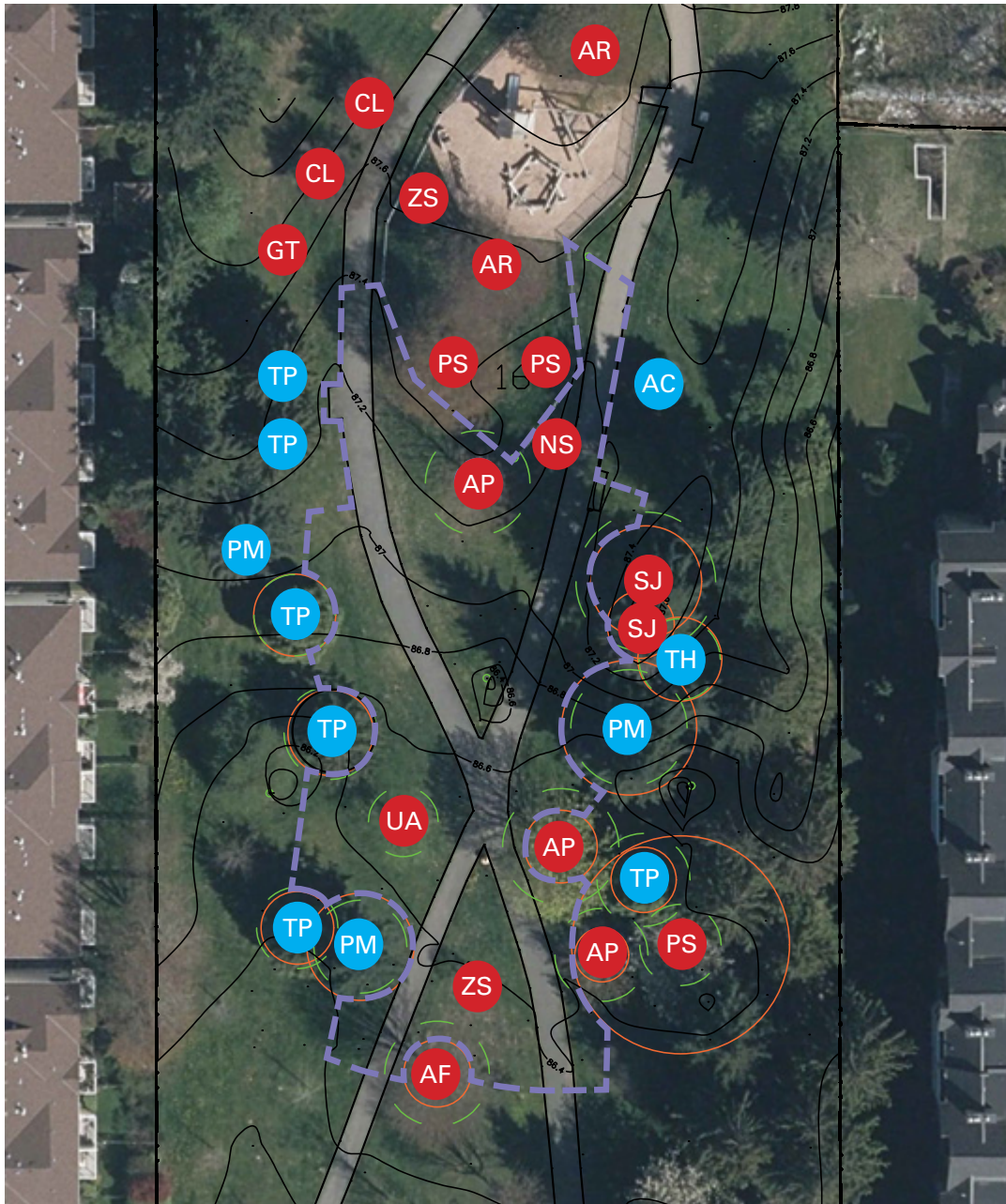
Approximate maximum extent of proposed paving if applicable to artwork (shape is adjustable)





# MAP 3

## R.A. NICHOLSON PARK TREES + TOPOGRAPHY



### Tree species

- AC *Abies concolor*, Colorado fir
- AF *Acer x freemani*, Freeman maple
- AR *Acer rubrum*, red maple
- AP *Acer platnanoides*, Norway maple
- CL *Crataegus x lavalleyi*, Lavalley hawthorn
- GT *Gleditsia triacanthos*, Honey locust
- NS *Nyssa sylvatica*, sour gum
- PS *Prunus serrulata*, Japanese cherry
- PM *Pseudotsuga menziessi*, Douglas fir
- SJ *Styrax japonicus*, Japanese snowbell
- TH *Tsuga heterophylla*, western hemlock
- TP *Thuja plicata*, western red cedar
- UA *Ulmus americana*, white elm
- ZS *Zelkova serrata*, Japanese elm

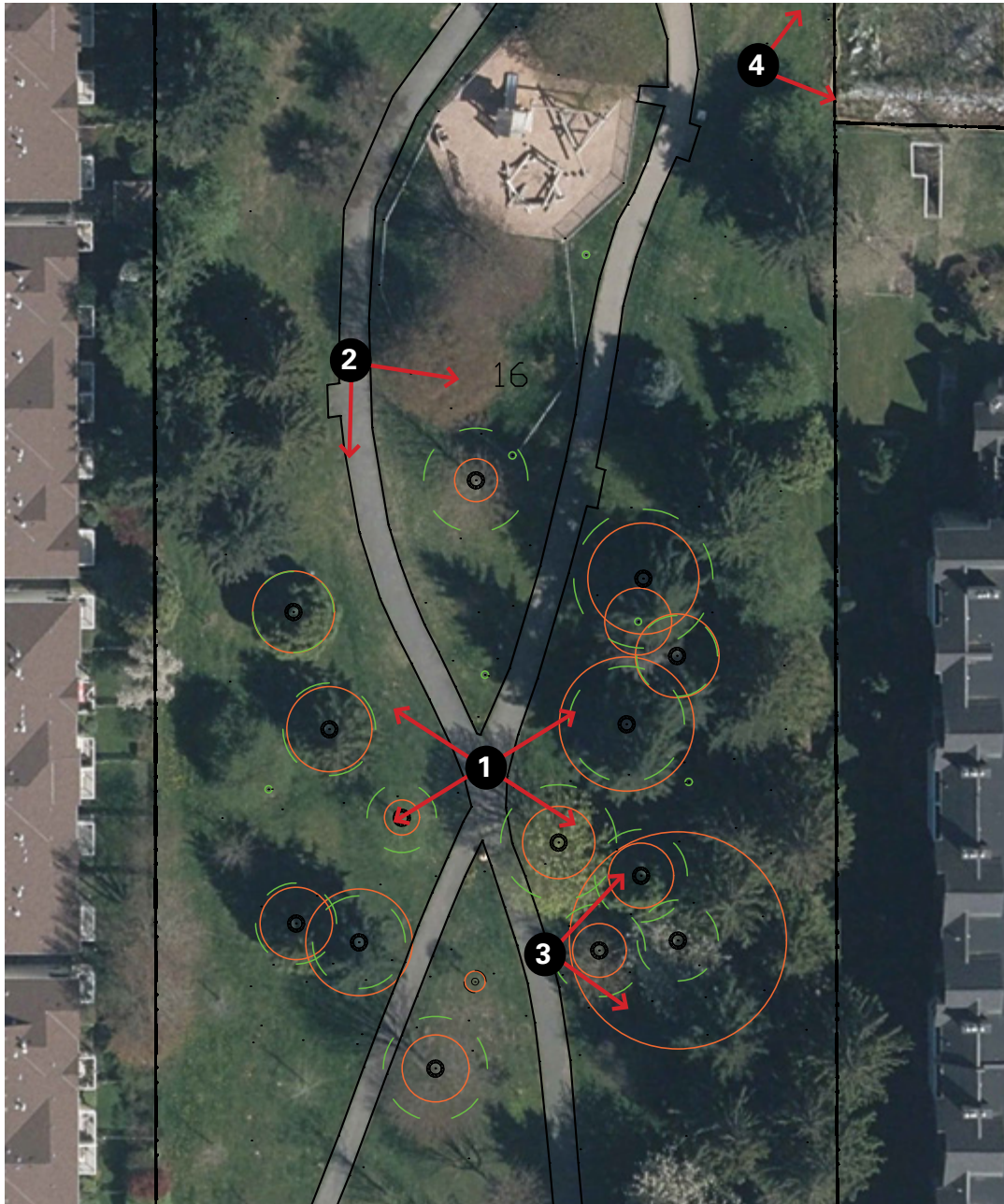
### Categories

- Deciduous      ● Coniferous
- Contour (drain north to south)



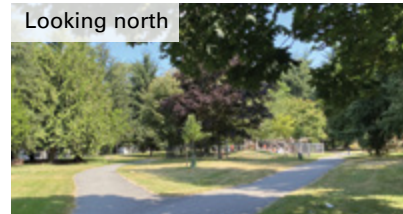
# MAP 4

## R.A. NICHOLSON PARK VIEWPOINTS

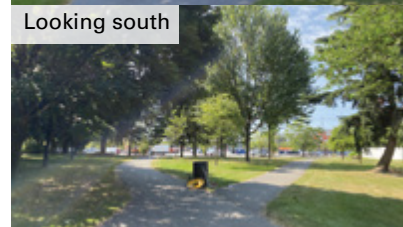


1

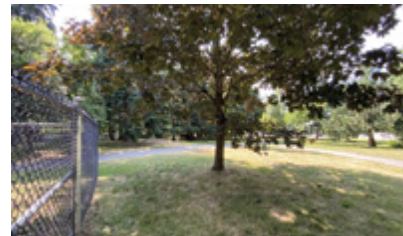
Looking north



Looking south



2



3



4



# MAP 5

## INOUYE PARK SITE CONTEXT + VIEWPOINTS



### Legend

- - - Area considered for art intervention
- . . . . . Barrier fencing
- - - Overhead hydro wire extent
- Bollard

### VIEWPOINTS

1



2

